



## THINGS TO KNOW:

1. We will meet at the LAKE DOUGLAS CHURCH PARKING LOT **Saturday at 9am** for prayer before heading out.
2. We will return **Wednesday, June 30 at 7pm**. If we're ahead or behind schedule, you will be notified.
3. Updates will be sent out via the church app. It can be downloaded at <https://gracega.info/app>.
4. Extra money - **2 meals on the road**, snacks, and souvenirs
5. Leaders:
  1. Jeremy - 770.789.1527
  2. Crissy - 770.298.2808
  3. Lindsey Jarrett - 850.557.6316
  4. DJ Strong - 850.643.6496

## TRANSPORTATION

1. We'll be taking 2 vehicles, the GCA white van and one personal vehicle.

# STUDENT LIFE MISSION CAMP PACKING LIST

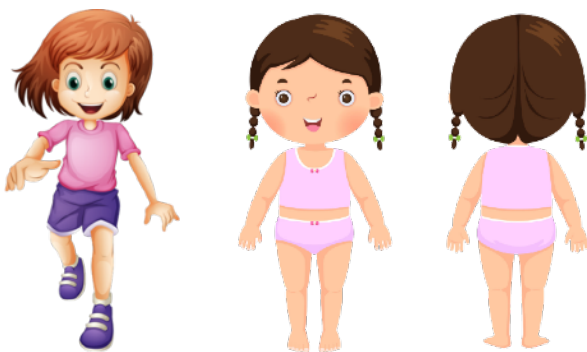
## DO BRING

### • WHAT TO BRING

- Modest, casual clothing for four nights of Worship
- Modest, comfortable clothing for three days of mission project activities
- Closed toe shoes (For mission project)
- Bible, pen & notebook
- Towels and washcloths
- Toiletries
- Bedding and pillow (Unless told otherwise)
- Spending money for snacks and Student Life Store
- Watch and/or alarm clock
- Sunscreen & Bug Spray
- Water bottle
- Swimsuit and beach towel
- Hand Soap for Bathrooms

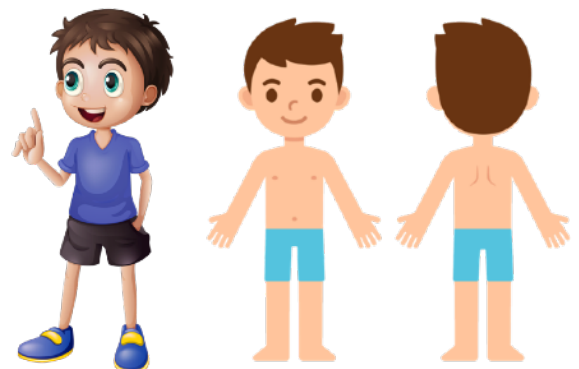
## DON'T BRING

- Tight or revealing clothing
- "Short" shorts or skirts
- Small bikinis (Unless covered with a dark t-shirt)
- Speedos
- Tobacco, drugs, alcohol or weapons
- Fireworks
- Water balloons
- Clothing with questionable or inappropriate sayings, slogans, etc.
- Clothing that promotes alcohol, cigarettes or any other inappropriate items
- Skateboards, roller skates or roller blades
- We prefer to keep a distraction free environment. Cell phone usage will be limited to free time each day in public areas and must be stored in your cabin with your cabin leader



## GIRLS REGULAR & SWIM GUIDELINES

## GUYS REGULAR & SWIM GUIDELINES





# MISSION CAMP PARENT PACKET

Student Life is excited to host your student at camp this summer. We have put together a packet of information not only to help you pack, but also to keep you informed about what the week looks like. Attached you will find a packing list, dress code, a breakdown of the daily Bible Study focuses and information on how to connect with your student while they are away. Thank you for allowing us to be a part of your student's life in what we are praying will be a truly transformational week.

## WHAT WILL YOUR STUDENT BE LEARNING?

### **“TAKE HEART” - JOHN 16:33**

No one wants to be afraid, to feel anxious, or nervous. We believe the lies and fears that the enemy seeks to instill in our lives. We walk into our schools, turn on the news, or talk to our friends, and leave feeling unsteady. But fear does not have to be the defining characteristic of our lives. The voice of the enemy does not have to overpower the voice of our Victor, Jesus. Jesus has erased the need for all fear and blocks out the sometimes overwhelming voice of the enemy. At Student Life Camp, students will learn that while the opponent is great, our God is greater. He was and is a God of kept promises, who has good plans for us. He is our stronghold in the midst of weakness, taking our hands in the face of uncertainty, and pushing us toward courage, pushing us to take heart.

## **DAILY BIBLE STUDY FOCUSES**

### **Day 1: PAST PROMISES, FUTURE CONFIDENCE**

Our God is good and He keeps His promises to us. Because God has kept His promises in the past, we can have confidence that He will keep His promises in the future. All of Scripture points to Jesus as the Son of God, and we can have confidence in His plans for us.

### **DAY 2: STRONGHOLD IN WEAKNESS**

The unknown is terrifying, especially when you don't feel equipped to handle it. Our insecurities can bring inescapable feelings of anxiety and fear. But take comfort and feel empowered in knowing that God uses people's weaknesses, and equips them for His kingdom's work in the midst of fear.

### **DAY 3: LOVE AND SUFFERING**

God promises to be with us. In fact, God sent His Son to die on the cross so that we could be saved and have a restored relationship with Him. But that doesn't mean we will live a perfect life. On the contrary, following Jesus requires suffering. As we grow in our love of Jesus, we grow in the realization that we are sinful—and that is painful. However, this suffering is not at the hands of a malicious God, but rather a loving God.

### **DAY 4: GREAT OPPONENT / GREATER GOD**

Sometimes the opponent of sin feels like more than we can handle. In those moments, we can take heart and see that God is greater than any opponent of sin or shame because He has already conquered them all. The battle has been won. Our God is greater.

